

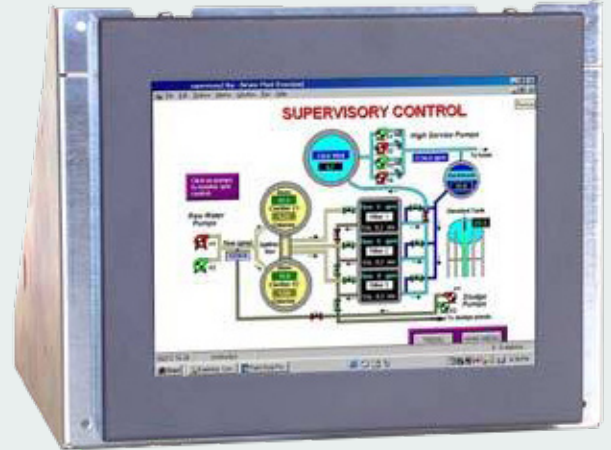
The 29LW10A71UN/1 series of Industrial LCD monitors has been designed as replacement for 10" CRT monitors. Ease of integration into a wide range of Measurement, Instrumentation and Human-Machine interface applications has been a key consideration. It uses KME's XP5.7 A-D board in an Open-Frame Chassis Base plate fixings and holes have been designed to pick up on the original CRT chassis mounting positions.

The 10A series offers full protection of the TFT panel with toughened safety glass and best EMC performance.

### Features

- 10" CRT Chassis Monitor dimensions
- Uses 8.4" TFT Panel
- CGA/EGA/VGA/SVGA compatible
- Programmable for Legacy signals
- 90 - 260V AC or 12/24Vdc operation
- Adjustable Tilt Positions 0° / 5° / 10° / 15°
- Optional Remote OSD controls
- Optional Monochrome settings

## 8.4" LCD Chassis Replacement for 10" CRT 29LW10A71UN



Specifications: see next page

Specifications		
TFT Characteristics	Safety glass fitted Front cover standard colour Active display area 10" CRT display area Brightness Backlight life	Yes Grey 170.4 x 127.8mm 175 x 130mm typical 350cd/m <sup>2</sup> 50,000 hours
Input connectors	15D only (order adapter cables separately, as required, for BNC & 9D inputs)	
Video Signal	Analog RGB 0.7V p-p via 15D (or via BNC adapter cable 30PH1240) 3-bit / 6-bit TTL RGB > 2.75V p-p (via 9D adapter cable 30PH1224) 4-bit TTL RGB > 2.75Vp-p (via 9D adapter cable 30PH1241)	
Signal Sync	Separate H&V (+/-ve) TTL	or Composite/mixed (-ve) TTL or Sync-on-green (-ve) 0.3V
Synchronisation Range	Horizontal scan Vertical scan	15 to 60kHz 40 to 100Hz
Power supply	90 - 260V AC - DC options available	
Power Consumption	30W max	
Part numbers		
Model	29LW10A71UN/1	

Specifications are subject to change without notice.

## • Monitors

Desktop Monitors  
Large screen Monitors  
Custom-made Monitors  
19" Rack Mount Monitors  
Rear Mount Monitors  
Monitors for Panel Mount  
Monitors for VESA Mount  
Kiosks  
Accessories

## • Monitors – Specific applications

Stainless Steel Monitors  
Car Displays  
Marine Monitors  
Military Monitors  
Replacement Monitors  
Train Monitors

## • Panel PC's

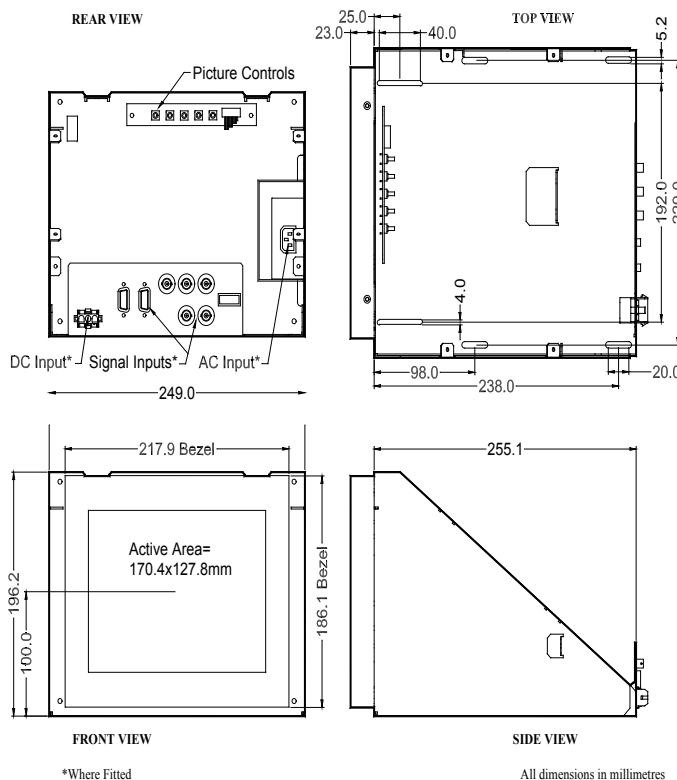
High Performance Systems  
Custom made Panel PC's  
Low Power Systems  
Extreme environments

## • Pointing devices

Accessories  
Touchpads  
Trackballs  
Trackball Modules  
Joysticks  
Custom made Pointing Devices

## • Keyboards

Desktop Keyboards with or without pointer  
Built-in Keyboards with or without pointer  
Cables & Connectors  
Custom made Keyboards



Mulder-Hardenberg, est. 1927, is the answer to professional demands in the domain of electronic related environments. We don't just sell products. We use our multidiscipline knowledge to provide the best possible solution, designed to your specific interest.

### Contact details:

The Netherlands  
Mulder-Hardenberg B.V.  
Westerhoutpark 1a  
2012 JL Haarlem  
Tel.: +31 23 531 91 84  
infonl@m-h.biz

Belgium, France, Luxemburg  
Mulder-Hardenberg N.V.  
Hoge Weg 129  
B-2940 Stabroek  
Belgium  
Tel.: +32 3 660 13 20  
infobe@m-h.biz

Germany  
Mulder-Hardenberg GmbH  
Nordring 13  
D-65719 Hofheim/Ts  
Tel.: +49 6192 - 97 91 85  
infode@m-h.biz